

NOMENCLATURE

Repère	Désignation des éléments	page	indice
	Ca. Cb	1	
	S1. S2. attentes cv	2	
	Poteaux P1. P2. P3. P4	3	
	Chainages verticaux - cha. 3	4	
	Poutre 1	5	
	" 2	6	
	" 2	7	
	Renfort R1	8	
	" R2	9	
	chb - L1 - 4 - 5	10	
	Armatures inférieures	11	
	" supérieures	12	
		13	
		14	
		15	
		16	
		17	
		18	
		19	
		20	
		21	
		22	
		23	
		24	
		25	
		26	
		27	
		28	
		29	
		30	
		31	
		32	
		33	
		34	

NOTA: Le rayon de courbure des aciers TOR sera conforme aux normes et aux prescriptions en vigueur

Méthode de dessin de ferrailage: brevet et modèle déposé

ARCHITECTE

ARCATURE



BUREAU D'ETUDES TECHNIQUES

Jacques RIVOIRE

Ingenieur Conseil Béton Armé

14, bd de la Préfecture - 42600 Montbrison
Tél. 77 58 58 40 - Fax 77 58 61 44

ENTREPRISE

LAMURE

Ind	Date	Modifications

Taux de travail du sol :

Surcharges libres :

Echelles: 4 cm.p.m

Fait à Montbrison le : 03.04.98

D.D.E ROANNE

Restructuration et création de

Bureaux et locaux annexes

CARNET DE FERRAILLAGE

PLAN DE REFERENCE

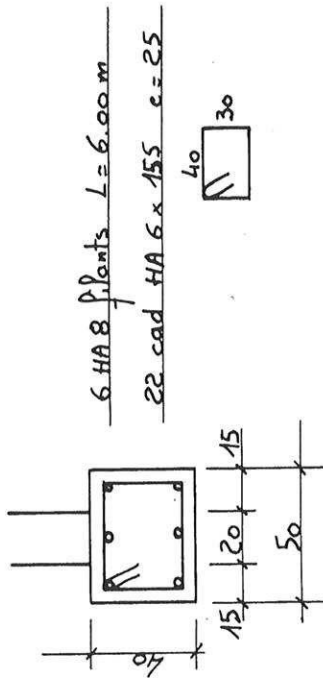
COFFRAGE N° 01

AFF. 2932 PLAN 02

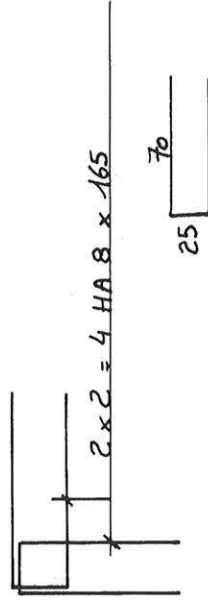
Béton: $\sigma_{28} = 275 \text{ kg/cm}^2$
 $\sigma_{28} = 23,7 \text{ kg/cm}^2$

Aciers: FeE 22 désigné par F1
FeE 50 désigné par T

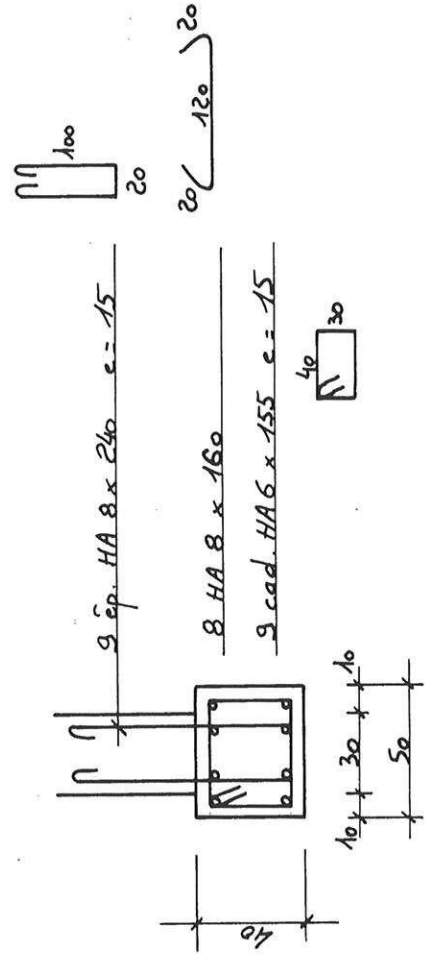
(a - 3 p.



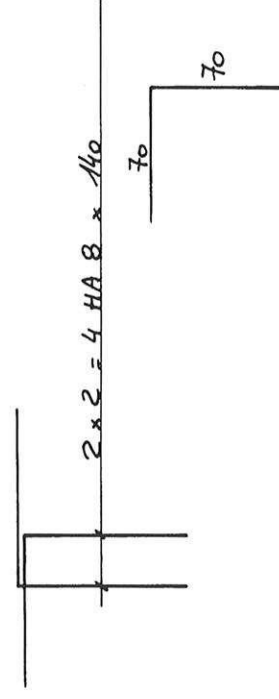
3 Renforts d'angle

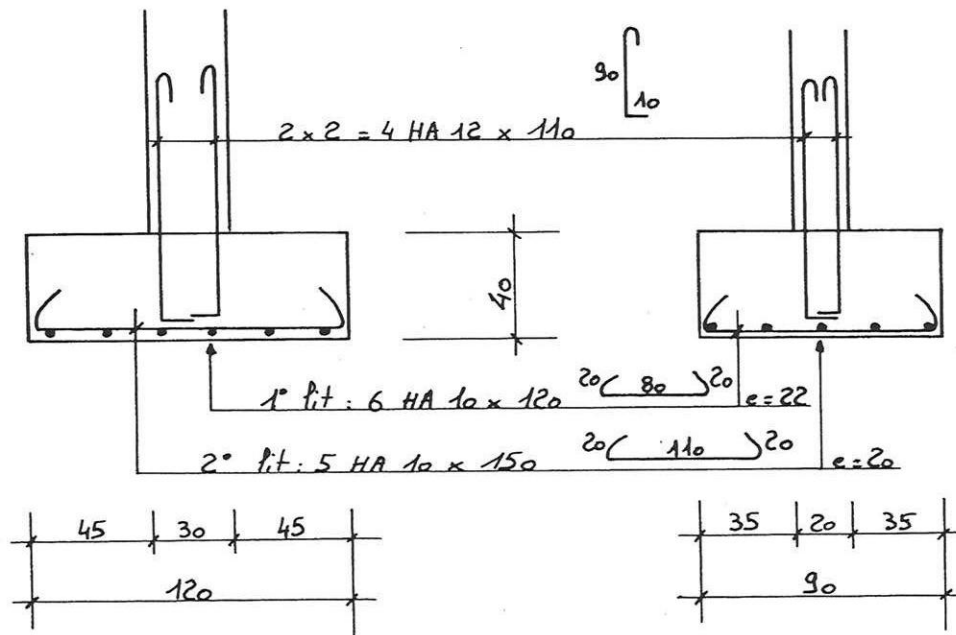
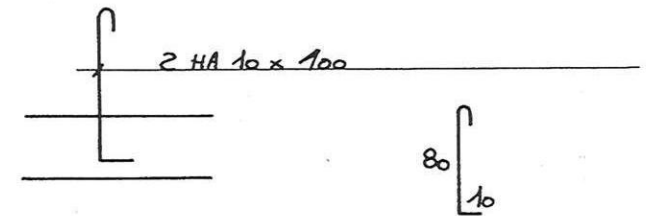
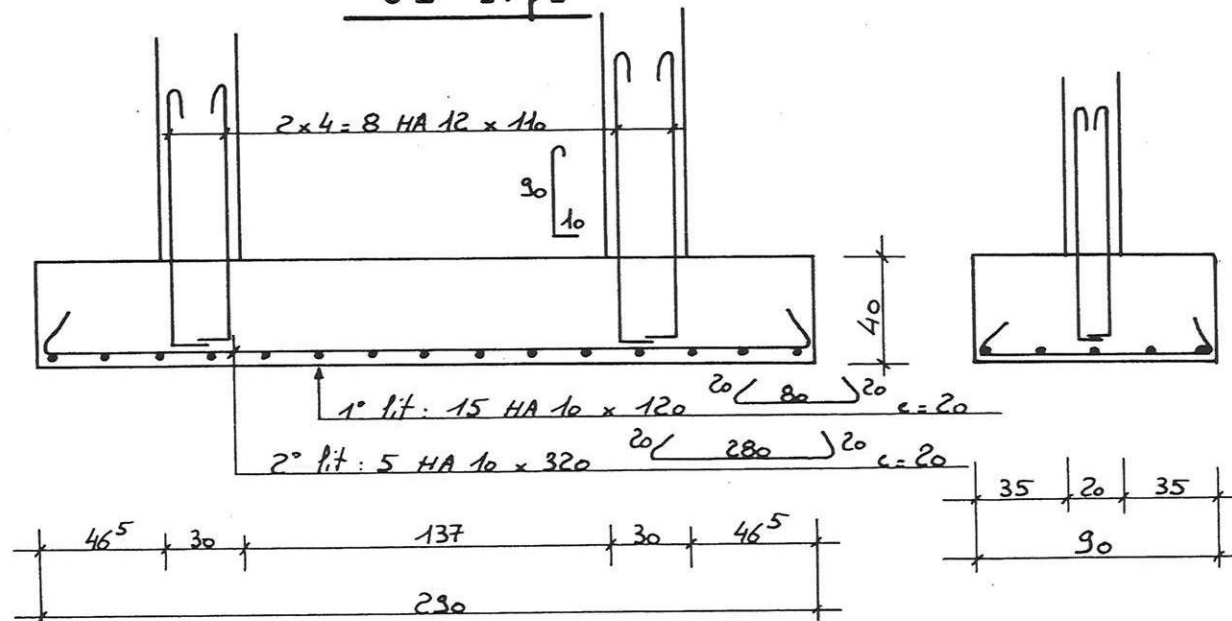


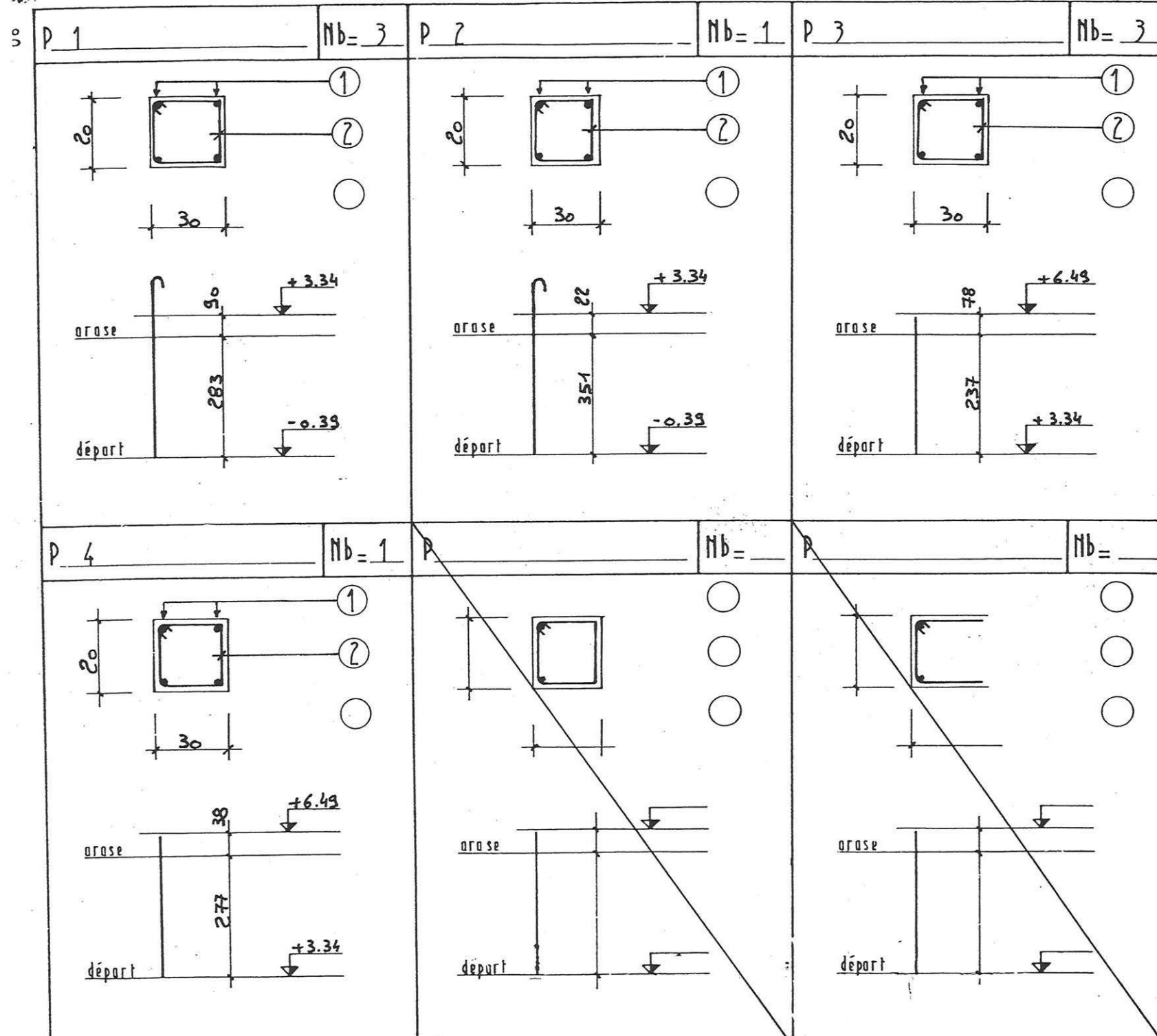
(b



1 Tête de refend



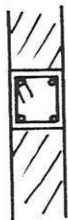
S1 - 2p.Attentes cv - 5p.S2 - 1p.





cv. 2p. 2 HA 10 x 365
cv 1 - 1p. 2 HA 10 x 120
cv 2 - 2p. 2 HA 10 x 250
cv 3 - 2p. 2 HA 10 x 310
cv 4 - 2p. 2 HA 10 x 165

cha .1,5 p.

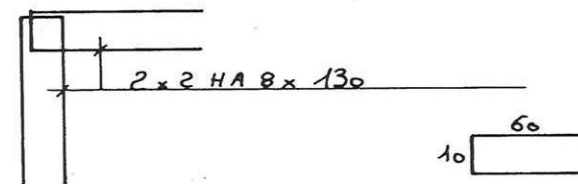


4 HA 8 plants L = 600 ml

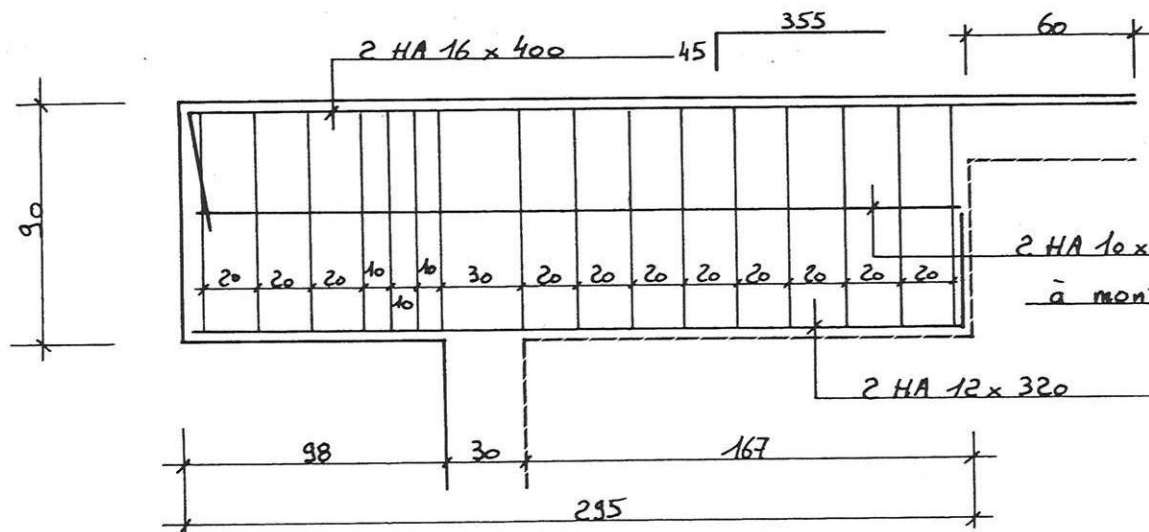
22 cad HA 6 x 75 c = 25



1 Renfort d'angle



3 - 2p.



2 HA 10 x 285

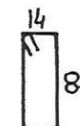
à monter sur place

2 HA 12 x 320

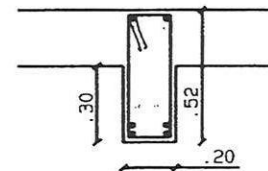
285 35

16 cad HA 6 x 215

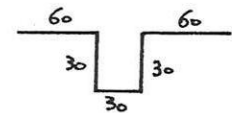
16 ép. HA 6 x 30



N. 6 31 CAD VER. HA 8 L= 1.40 $\square 46$
14



barres pliées 2 HA 10 x 210



N. 3 2 HA 12 L= 1.80

à monter sur place

149
31

1.32

N. 4 2 HA 8 L= 6.70

1.32

N. 5 2 HA 12 L= 1.80

à monter sur place

149
31

670

30 695 30

N. 1 2 HA 25 L= 7.55

N. 2 2 HA 20 L= 4.80

480

.90

5 14 14 16 19 23 29 35 35 29 23 19 16 14 14 5
14 14 15 17 20 24 31 40 31 24 20 17 15 14 14

20

377

20

263

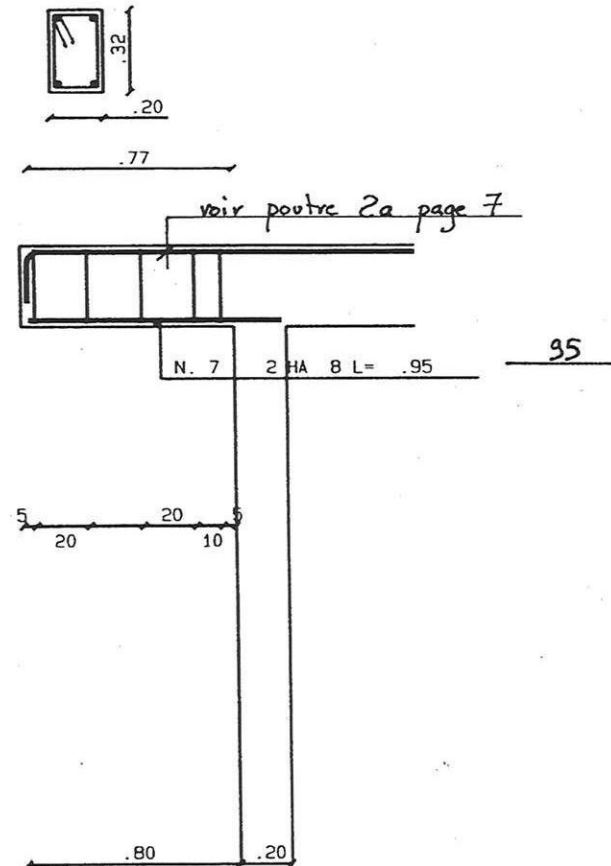
20

6.60

.20

.20

N. 8 5 CAD VER. HA 6 L= 1.00 $\frac{R}{26}$

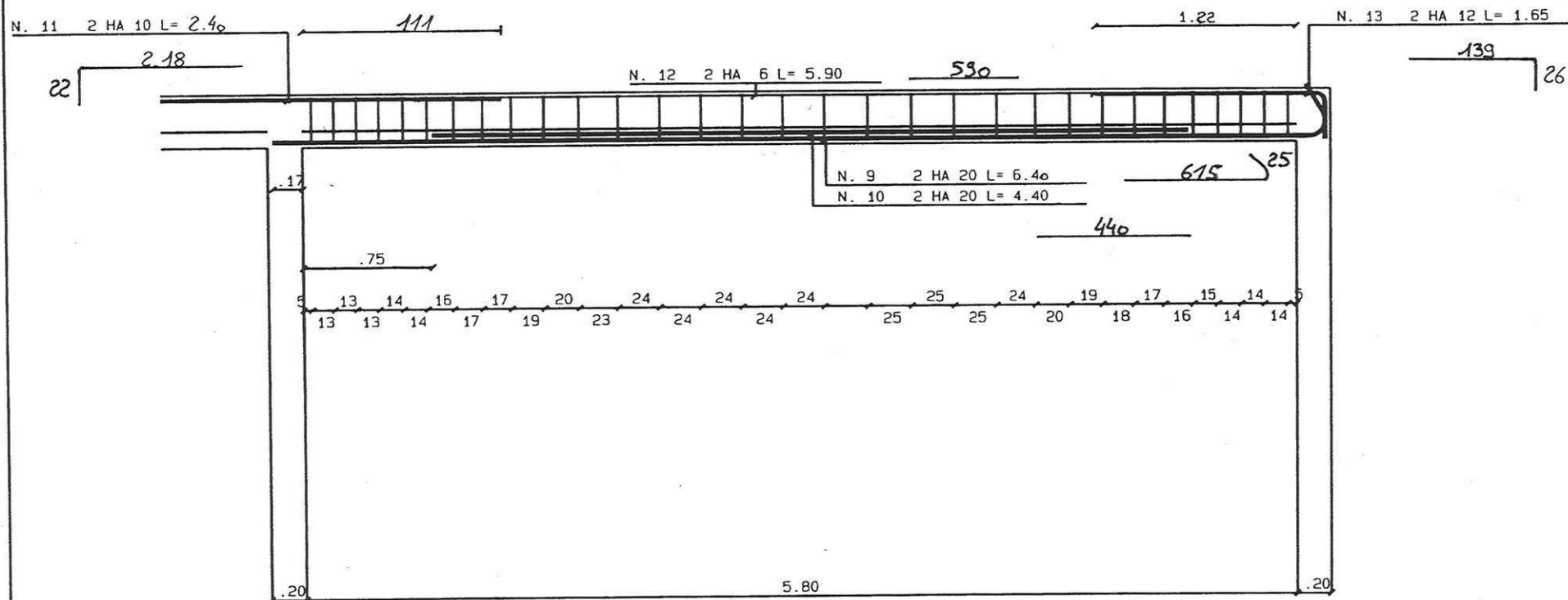
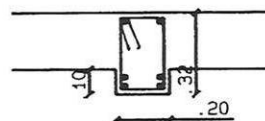


D.D.E ROANNE
2932 - 02

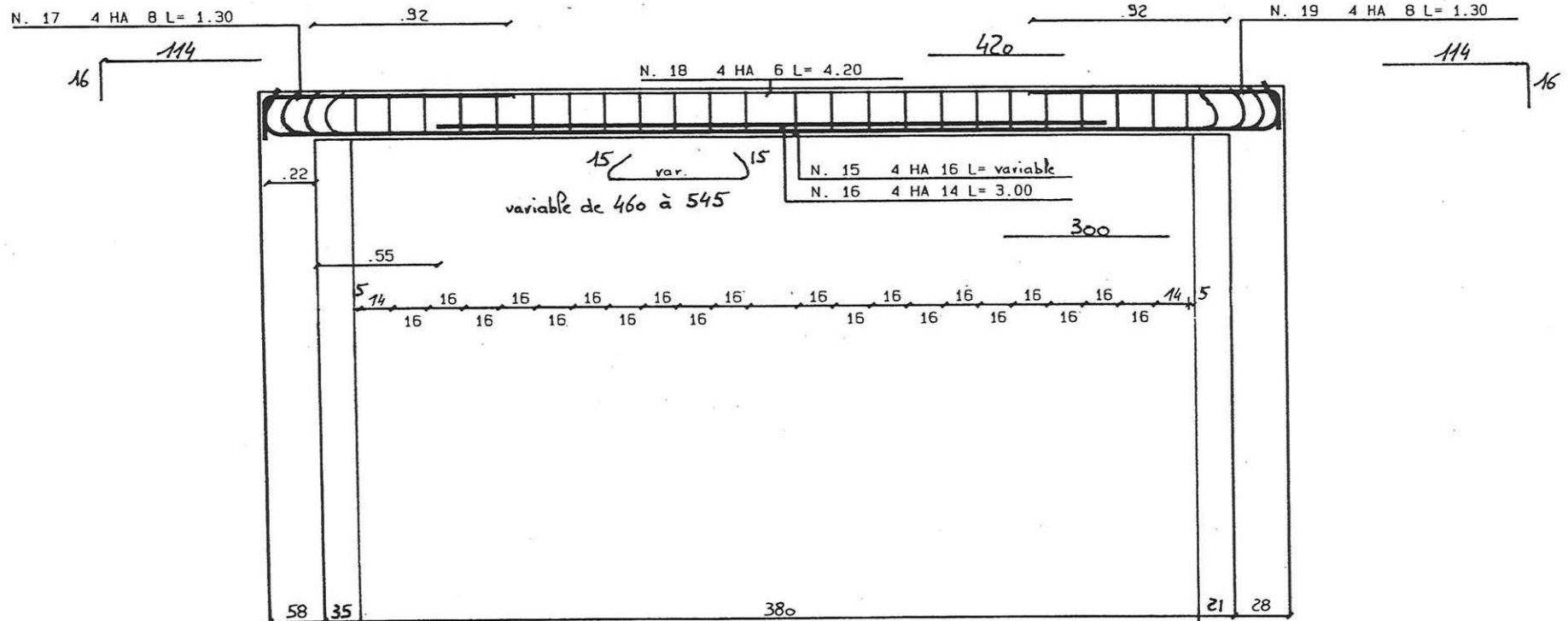
POUTRE 20 .20 X .32

J. RIVOIRE Ing. Conseil BA.
Page 7

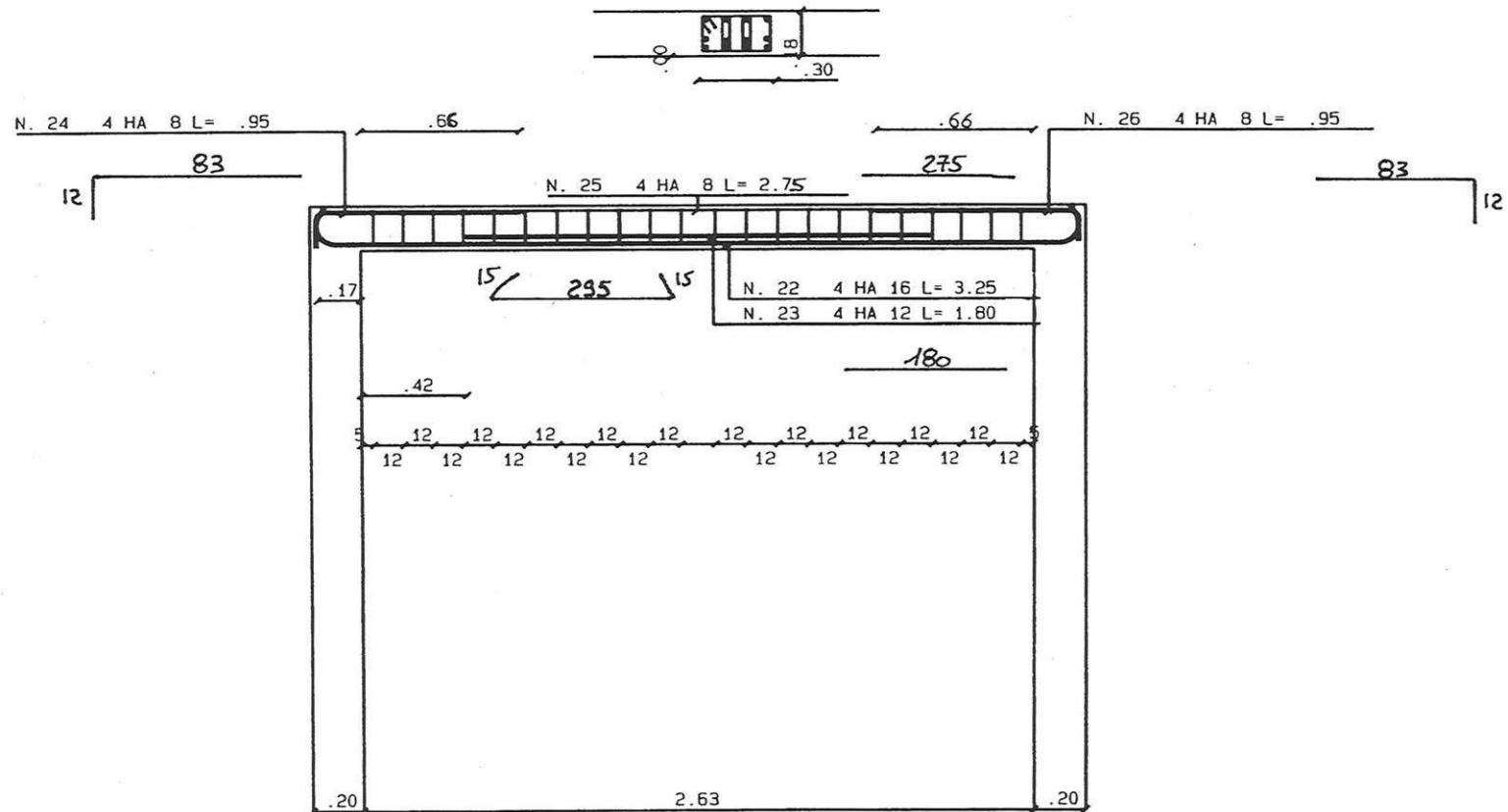
N. 14 31 CAD VER. HA 8 L= 1.00 ¹⁴ 26

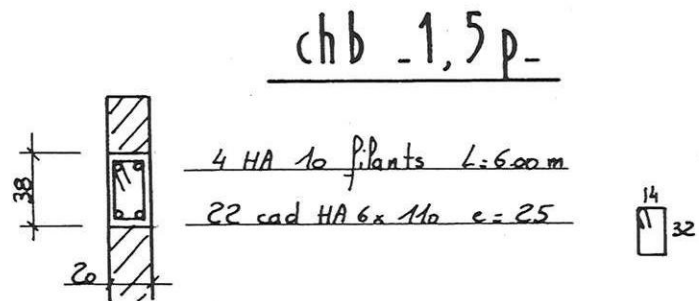
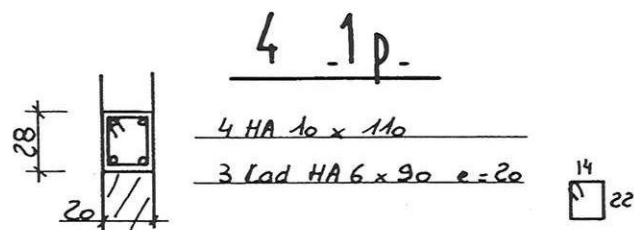
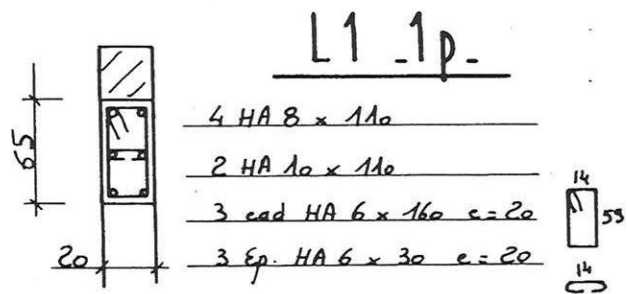


N. 20 24 CAD VER. HA 6 L= 1.20 ³⁴ 16
N. 21 48 LIG VER. HA 6 L= .52 16

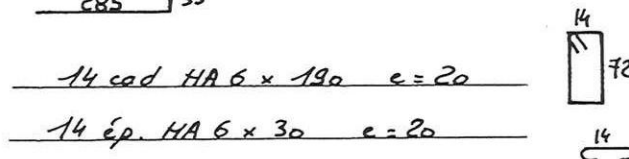
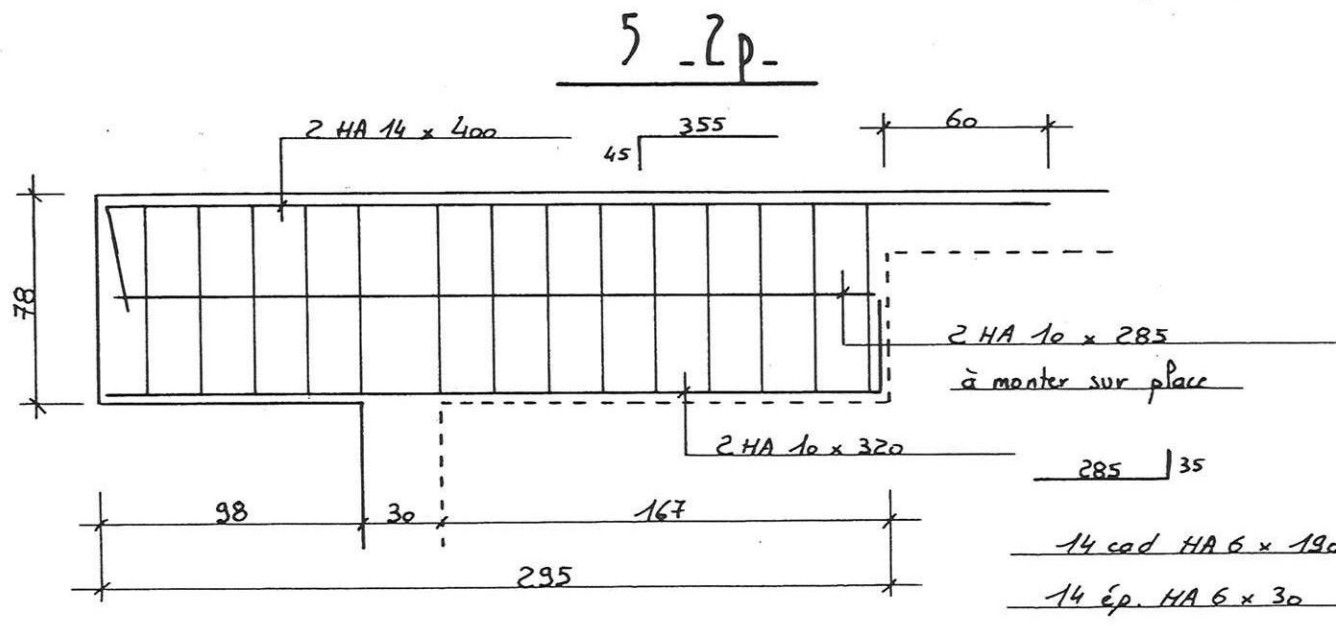
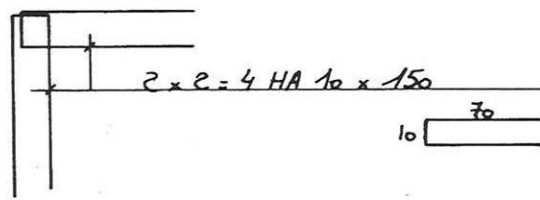


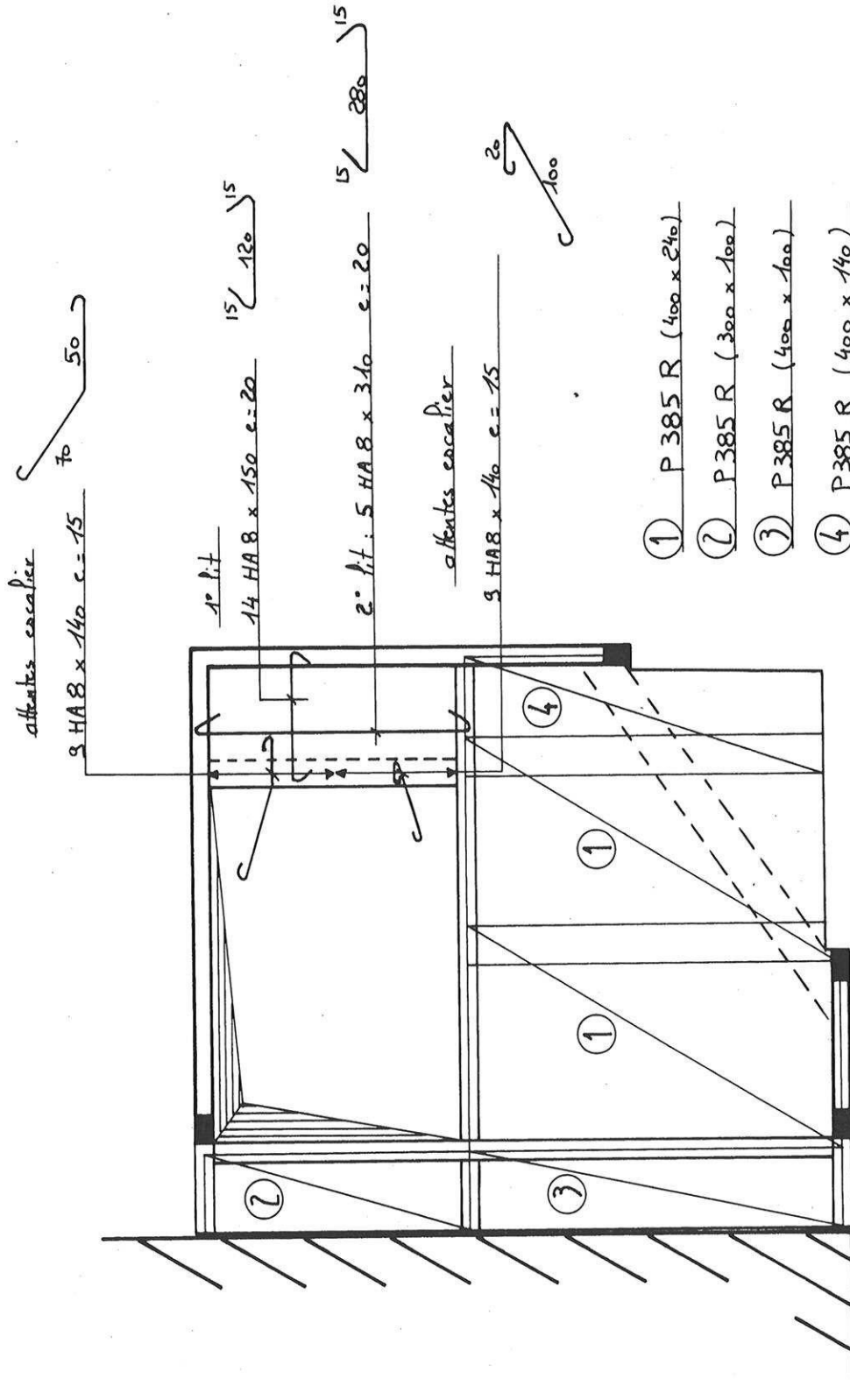
N.	27	22	CAD	VER.	HA	6	L=	.92	²⁴ 012
N.	28	44	LIG	VER.	HA	6	L=	.44	012

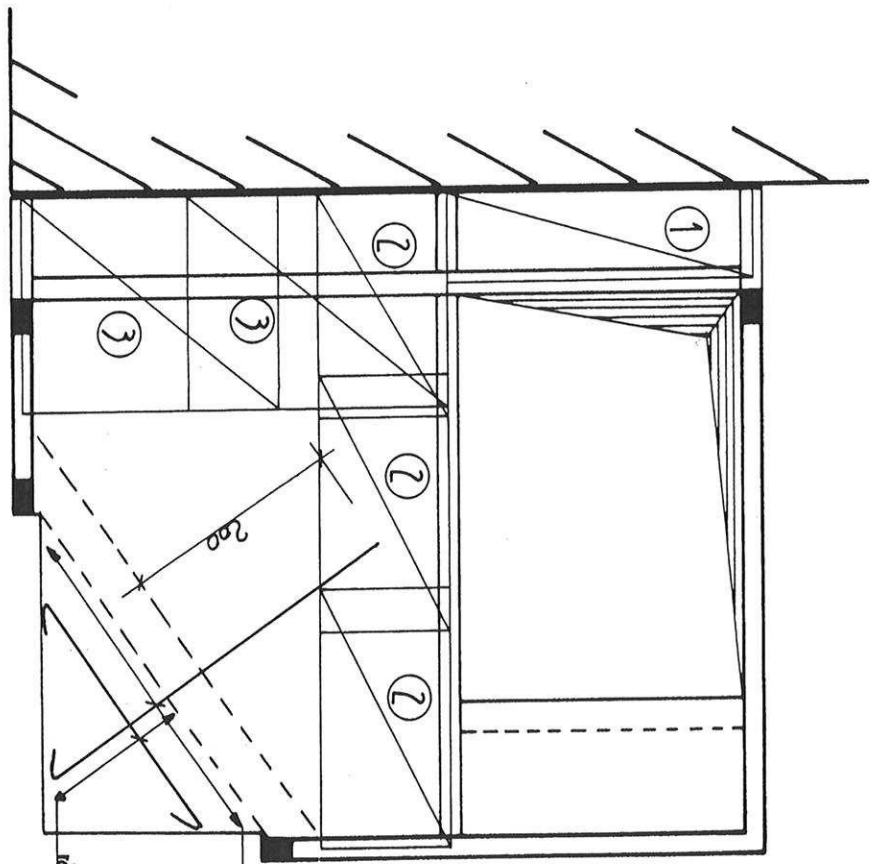




1 Renfort d'angle







- ① P 385 R (300 x 100)
- ② P 385 R (120 x 240)
- ③ P 385 R (200 x 240)
- TOTAL : 4 P 385 R (600 x 240)
- (maître 100 x 300, fils de 7,75)

22 HA 10 x variable e=15 var. 15

départition : 10 HA 10 x variable e=15 15 var. 15

